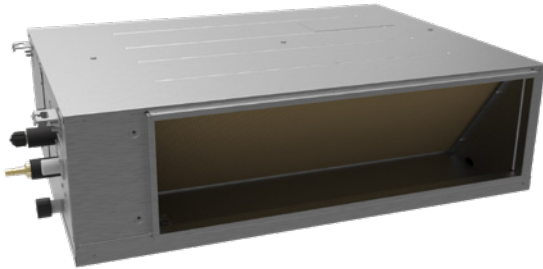


Bulkhead Free Match Ducted Indoor Units



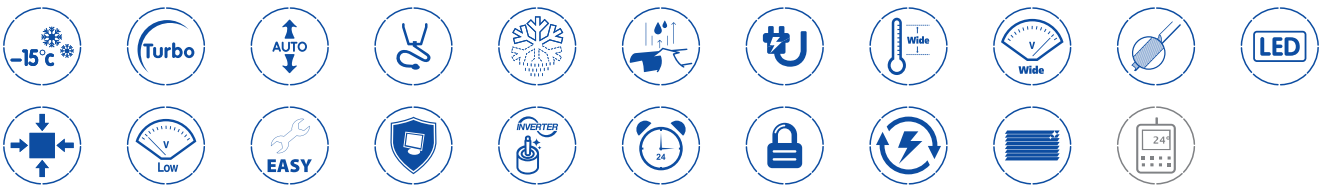
XK46

The Gree slim duct range of indoor units offers the ultimate in flexibility and discretion. Hidden from view in ceiling spaces these units are designed to supply conditioned air via a ceiling or wall diffuser.



(Optional)

Bulkhead Features



Series		Bulkhead Ducted				
Realcold Part No.						
Indoor Model No.		GFH(09)EA-K6DNA1B/I	GFH(12)EA-K6DNA1B/I	GFH(18)EA-K6DNA1B/I	GFH(21)EA-K6DNA1B/I	GFH(24)EA-K6DNA1B/I
Performance						
Cooling Capacity	kW	2.5	3.5	5	6	7.1
Heating Capacity	kW	2.8	3.85	5.5	6.6	8
Dehumidifying Volume	l/s	-	-	-	-	-
Air flow	m ³ / h	450	550	700	1000	1000
Static Pressure	Pa	5	5	5	5	5
Sound Pressure	dB (A)	31~37	32~39	33~41	34~42	34~42
Sound Power	dB (A)	41~47	42~49	43~51	44~52	44~52
Indoor T ° set-point range	°C	+16~+30	+16~+30	+16~+30	+16~+30	+16~+30
Electrical						
Power Supply (From Outdoor)	V/P/Hz	220~240 / 1 / 50				
Power / Communication Cable	m	3 x 1.5 + E	3 x 1.5 + E	3 x 1.5 + E	3 x 1.5 + E	3 x 1.5 + E
Dimensions and Weights						
Product Length / Height / Depth	mm	700x200x615	700x200x615	900x200x615	1100x200x615	1100x200x615
Net / gross weight	kg	21	22	26	30	30
Installation						
Refrigeration connections	Liquid	6.35 (1 / 4")	6.35 (1 / 4")	6.35 (1 / 4")	9.52 (3 / 8")	9.52 (3 / 8")
	Gas	9.52 (3 / 8")	9.52 (3 / 8")	12.7 (1 / 2")	15.88 (5 / 8")	15.88 (5 / 8")
Drain Connection	mm	-	-	-	-	-