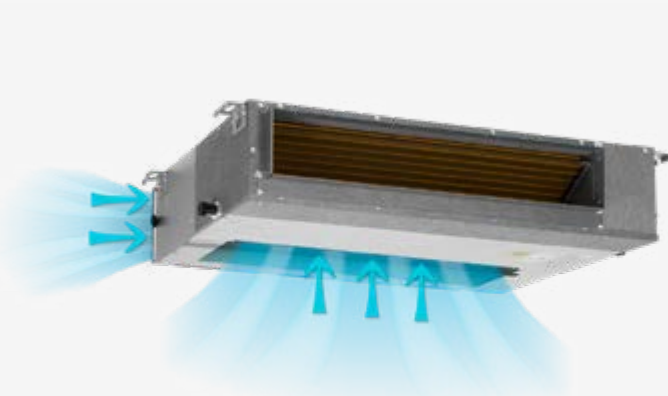



Two Air Inlet Styles

Super Slim Design


- Built-in Drain Pump
- Fan On/Off Switch
- HM Hotel Menu
- Smart Controller
- Static Pressure Settings
- Weekly Planner Controller
- Front Desk Control On/Off (Optional)
- Central Control Management (Optional)

MODEL		LV5MDI32-12WiFiR
Cooling Capacity (Btu/h)		12,000 (2,100-15,000)
Cooling Capacity (kWatt)		3.52 (0.61-4.40)
Heating Capacity (Btu/h)		13,000 (2,100-17,500)
Heating Capacity (kWatt)		3.81 (0.62-5.13)
Voltage/Frequency/Phase (V/Hz/Ph)		220-240/50/1
Current Input (A)	Cooling	0.17
	Heating	0.17
Power Input (W)	Cooling	40
	Heating	40
Air Flow Volume (High/Medium/Low) (m³/h)		600/480/300
Static Pressure (Pa)		0-60
Noise Level (Low/Medium/High) [dB(A)]		35/38/42
Sound Power Level [dB(A)]		59
Dimensions (WxDxH) (mm)		700x450x200
Net Weight (kg)		18
Liquid Line		1/4"
Gas Line		3/8"



Wi-Fi Ready

The advanced technology of the new Inventor Multi Duct air conditioners provide the option of remote management & allows you to set your air conditioner easily from wherever you are. Install the Wi-Fi Smart Port, download for free the Invmate II application through Google Play & App Store on your Smartphone or Tablet and create ideal conditions all over your place.