

Digifel Duo/Digifel - Hermetic Boiler



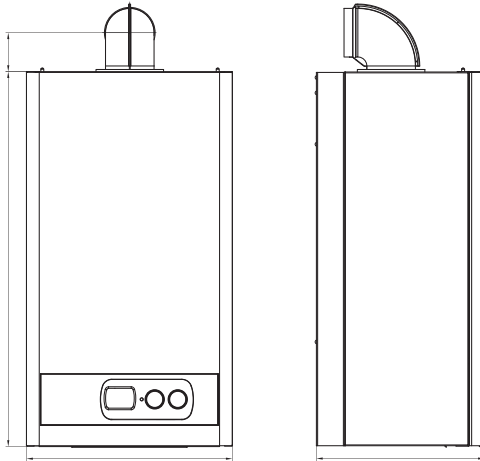
- Hermetic Boiler with 24 kW and 28 kW capacity
- Easy to use LCD screen
- High efficiency 93%
- Aesthetic look with modern design
- Full flame modulation with electronic ignition
- 3-star combustion performance according to 92/42/EEC directive
(Applicable for Digifel Duo KM1-24CE model.)
- Powered with Natural gas or LPG
- Double exchanger system
- Copper-made main exchanger
- Stainless steel plate exchanger
- Low consumption 3 stage long-lasting silent pump
- Hot water access in low city water (0,5 Bar)
- Electrical protection class IPX5D
- Device protection with 13 different safety systems
- Automatic detection system with LCD screen
- Room thermostat (optional)
- Easy assembly and maintenance
- Available for floor heating system



	Features	Units	DIGIFEL KB2-24 CE	DIGIFEL DUO KM1-24CE	DIGIFEL DUO KM1-28CE
Energy Performance	Rated thermal load max.	kW	25,9	25,7	30,7
	Rated thermal load min.	kW	11	10,5	12,2
	Max./Min. Heating power (80/60°C)	kW	24,1 / 9,6	23,8/9,4	28,1/10,7
	Max./Min. Heating power (50/30°C)	kW	----	----	----
	Efficiency (80/60°C)	%	93,1	92,8	91,5
	Efficiency (50/30°C)	%	----	----	----
	Combustion Performance (92/42/EEC)		***	***	***
	NOx class		2	2	2
Waste gas temperature max./min.	°C	108	108,2	129,2	
Heating Circuit	Minimum operating pressure	bar	0,5	0,5	0,5
	Maximum operating pressure	bar	3	3	3
	Expansion tank capacity	liter	7	7	7
	Expansion tank initial pressure	bar	1	1	1
	Heating circuit temperature range	°C	35/85	35/85	35/85
Domestic Water Circuit	Domestic water temperature max./min.	°C	35/55	35/55	35/55
	Hot water amount DT=25 °K	Liter/ dak	11	10,2	12,3
	Domestic water comfort (EN 13203)		**	***	***
	Minimum hot water flow	Liter/ dak	2,1	2,1	2,1
	Water installation pressure max./min.	Bar	10/0,5	10/0,5	10/0,5
Electrical Data	Supply voltage	V/Hz	230/50	230/49	230/50
	Electrical power	W	110	110	115
	Electrical protection class	IP	X5D	X5D	X5D
Gas Pressure	Natural gas (G20) inlet pressure	mbar	20	20	20
	LPG (G30/G31) inlet pressure	mbar	30/37	30/37	30/37
	Natural gas (G20) cons. (max./min.)	m ³ /h	2,54/1,1	2,54/1,1	2,88/1,2
	Natural gas (G30) cons.max./min.)	kg/h	1,88 / 0,82	1,88 / 0,81	2,15/0,9
	Natural gas (G31) cons. (max./min.)	kg/h	1,87 / 0,81	1,87 / 0,80	2,1/0,9
Weight and Sizes	Net Weight	kg	34	35	35
	Device sizes	mm	403*733*329	403*730*329	403*730*329
	Weight (with packaging)	kg	38	39	39
	Box sizes	mm	470*840*420	470*840*420	470*840*420
	Max. funnel length (60/100 mm)	m	4	5	5
	Max. funnel length (80/125 mm)	m	-	-	-
Max. funnel length (80/80 mm)	m	-	-	-	

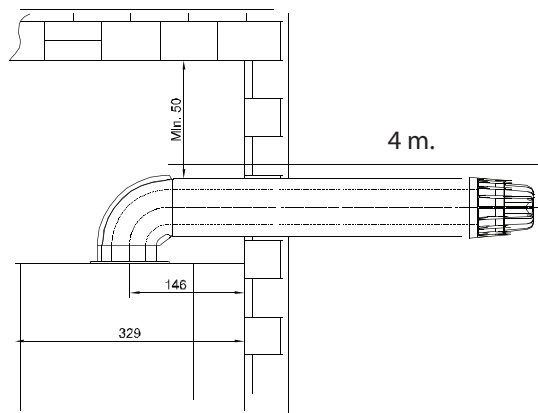
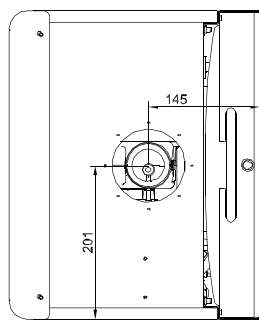
Digifel Duo/Digifel - Hermetic Boiler

Dimensions

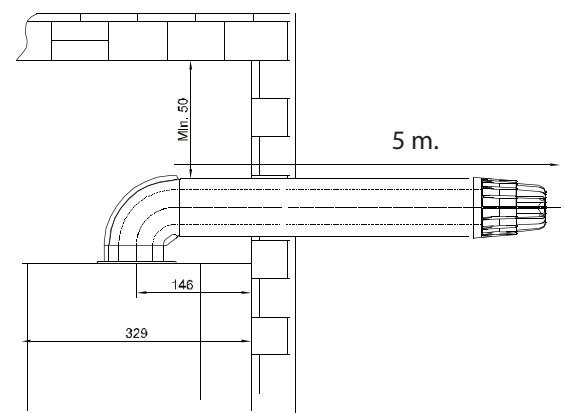


Dimensions	KB2 24 CE	KM1 24 CE	KM1 28 CE
Height (mm)	733	733	733
Width (mm)	403	403	403
Depth (mm)	329	329	329

Flue Gas Connections



Digifel



Digifel Duo

Pump Operation Curve

The circulation pump used in Digifel/Digifel Duo combi boilers has 5 mSS pumping height and three levels. Circulation pump is classified in low energy class

