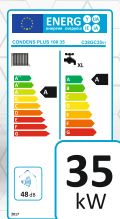
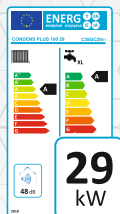


CONDENS PLUS 100



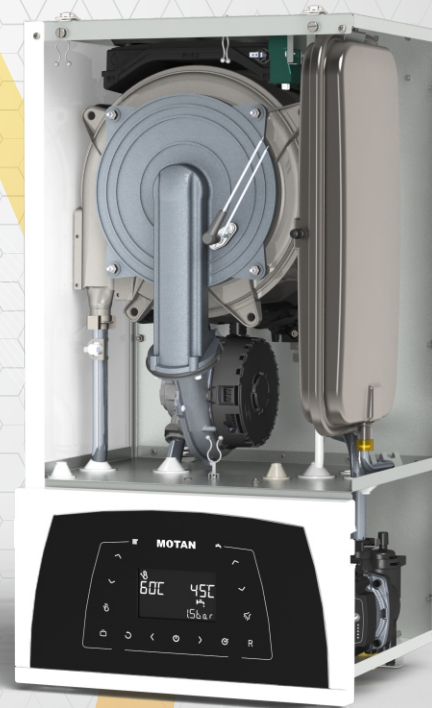
CLIENT ADVANTAGES:

- ♦ HIGT-TECH look - glass frontal panel (touch screen) with 4.3 inch display (visible area) ;
- ♦ Up to 106% efficiency and 1:10 modulation ratio;
- ♦ Power range 25, 29 and 35 kW;
- ♦ Friendly environment - during operation releases significantly reduced amounts of NO_x, CO and CO₂ - Class NO_x 5;
- ♦ High comfort on DHW circuit - OVERSIZED secondary heat exchanger;
- ♦ Designed and build for maximum operating efficiency and economy according to the latest European legislative requirements;
- ♦ STAINLESS STEEL primary heat exchanger;
- ♦ The possibility of connecting a chrono-thermostat, remote control panel and/or external temperature probe;

Constructive and functional characteristics

	C38GC25V1 CONDENS PLUS 10025	C38GC29V1 CONDENS PLUS 10029	C38GC35V1 CONDENS PLUS 10035		
Type	CONDENS PLUS				
Trade name	10025	10029	10035		
Efficiency stars (dir. 92/42/CEE)	****	****	****		
Gas category to be used	G20-I2H				
Flue type	Forced, variable speed fan				
Nox class (G20-I2H, G24, G25.1, G31)	5	5	5		
Heating energy efficiency class	A	A	A		
Max power (80/60°C)(G20-I2H)	25,6 kW	28,3 kW	32,8 kW		
Max power (50/30°C - condensing)(G20-I2H)	28,2 kW	32,4 kW	35,8 kW		
Output performance at nominal heat input (80/60°C)(G20-I2H)	97%	97%	97%		
Output performance at nominal heat input (50/30°C - condensing)(G20-I2H)	106%	106%	106%		
Max gas nominal consumption	≈2,8 Nmc/h	≈3 Nmc/h	≈3,5 Nmc/h		
Gas pressure (G20-I2H)		20 mbar			
Gas pressure (GN)		35 mbar			
Maximum pressure on CH circuit		0,8 ÷ 3 bar			
Temperature adjustment interval CH		30 ÷ 80°C			
Temperature adjustment interval underfloor		15 ÷ 45°C			
Maximum pressure on the hot water circuit		0,2 ÷ 8 bar			
Temperature adjustment interval		30 ÷ 55°C			
Hot water flow at ΔT = 30°C (flow restrictor 12l/min)	13,5 l/min	15,7 l/min	17 l/min		
DHW Confort EN 13203	***	***	***		
DHW efficiency class		A, load profile XL			
Constructive features	Height (mm)	750	750	750	
	Width (mm)	400	400	400	
	Depth (mm)	345	345	345	
	Weight	32 kg	34 kg	35 kg	
	Primary heat exchanger capacity	1,4 l	1,6 l	1,8 l	
	Connectors	Thermal input, output	3/4"		
		Cold water input, hot water output	1/2"		
		Gas input	3/4"		
	Expansion vessel with membrane	8 l			
	Air/ gas incoming/ outgoing flue pipe	Coaxial D100/D60, Dual D80*			
	Length of burnt gases connecting pipe	Coaxial max 20m; Dual max 20m*			
	Evacuation type	B13, B15, C13, C15, C17, C23, C25, C27, C33, C35, C37, C43, C45, C47, C53, C55, C57, C63, C65, C67, C73, C75, C77, C83, C85, C87			
Flue temp.	≈80°C	≈70°C	≈82°C		
Electrical characteristics	Power	~230VAC/50 Hz			
	Nominal power	81 W			
	Protection class	IP 40			

* The standard gas boiler is delivered with dual coaxial kit as accessory; dual kit is delivered as accessory on demand



MOTAN wall hung gas boilers integrate components of the best quality:

- ♦ Condensing heat exchanger Circond - Valmex (Italy);
- ♦ Circulation pump GRUNDFOS (Denmark);
- ♦ Gas valve SIT (Italy);
- ♦ Build-in gas-air nozzle fan SIT (Italy);
- ♦ Brass hydroblock Fugas (Italy);
- ♦ Safety valve Kramer / Bitron (Italy);

